

Biotube[®] Effluent Filters

Installation, Operation and Maintenance Instructions

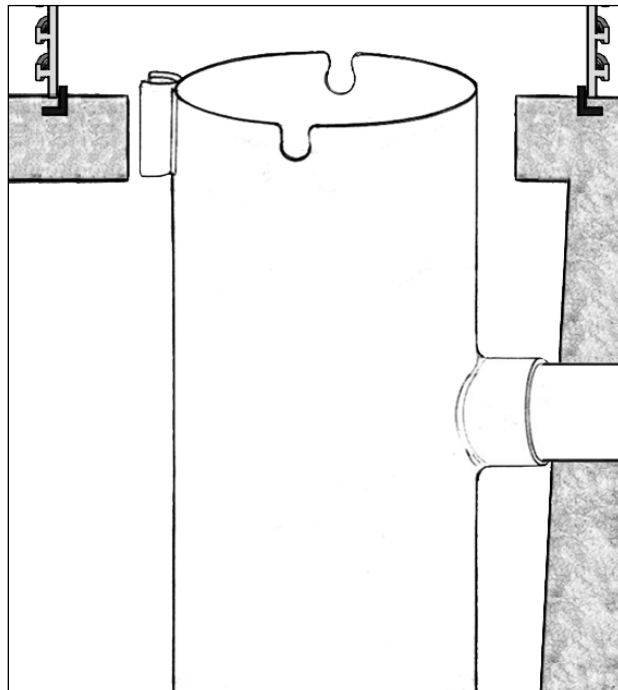
Model FT12__, FT15__

U.S. Patent Nos. 5294635/4439323

Installation Instructions:

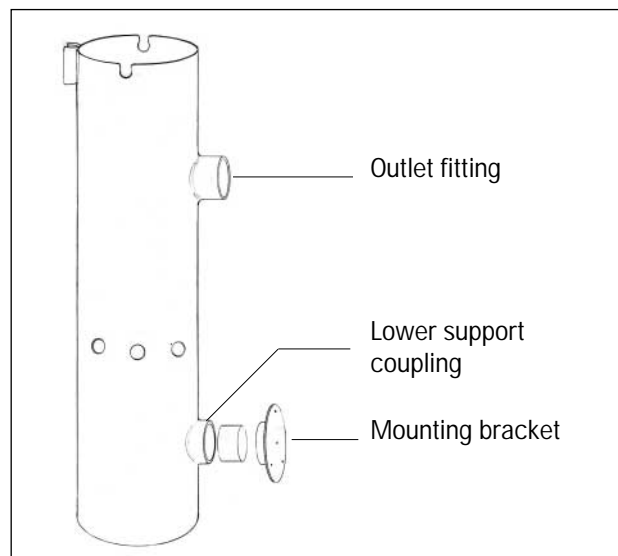
The Biotube Effluent Filter is suspended in the septic tank by the 4" outlet pipe and footing bracket. The filter is composed of a vault body that will be fixed to the discharge pipe and a removable cartridge that consists of the Biotube filter cartridge and the extendible handle.

1. Measure the distance between the 4" inlet and the footing bracket. Mount the footing bracket on the wall of the tank at the same distance so that both support points line up correctly. Try to mount the bracket as vertically as possible.



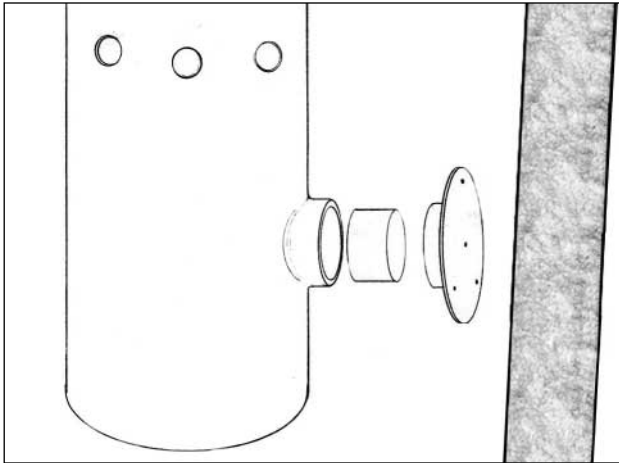
2. Cut a section of 4" pipe to fit between the lower support coupling and the footing bracket. The section of pipe should be just long enough so that the filter vault is vertical. Test the fit with the filter vault (before gluing the pipe) to ensure it is vertical.

Any existing outlet tee will have to be removed.



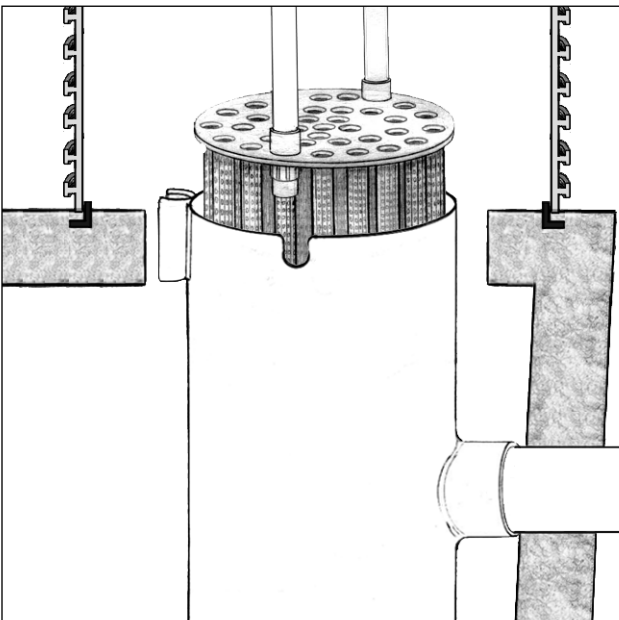
Installation Instructions (continued)

3. Glue the 4" pipe into the footing bracket.



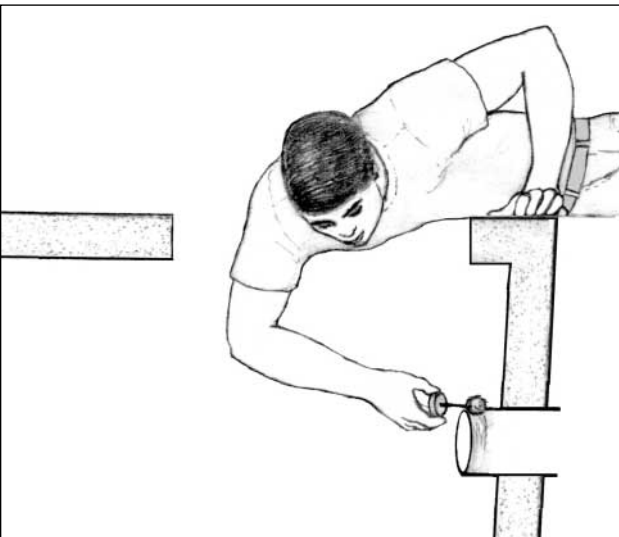
4. Ensure sufficient clearance for trouble free servicing of filter cartridge. Install assembly near the tank wall to reduce any stresses that may be caused by maintenance.

Sufficient room between the access port and filter should be provided for easy removal of solids from the tank. The cartridge will need to be removed and cleaned while the tank's solids content is being pumped out.



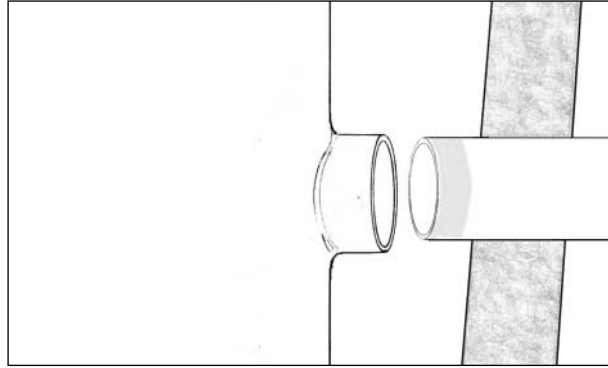
5. Once the filter has been fitted properly, apply primer and PVC cement to the outside of the outlet pipe, the filter's 4" outlet, the 4" support pipe, and the lower support coupling. Use a multipurpose cement if the outlet pipe is ABS. Do not use primer on ABS.

Optional: Stainless steel set screws may be used instead of glue.



Installation Instructions (continued)

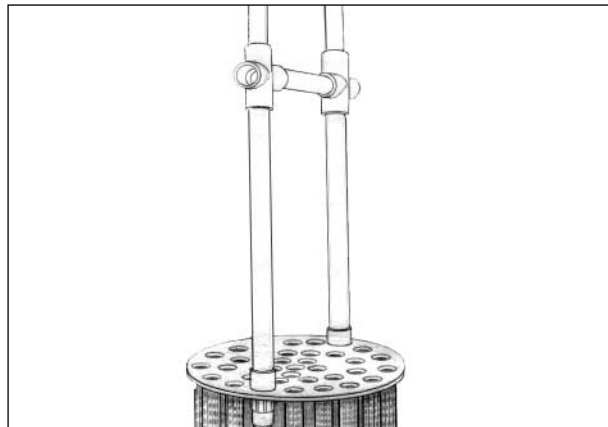
- Slide the effluent filter onto the 4" pipe(s) and plumb vertically.
- Hold the filter in position until the adhesive has time to set (approximately 20 seconds).



- Extend the handle of the cartridge to an elevation above the top of the tank for easy access.

Use 3/4" schedule 40 PVC for extension.

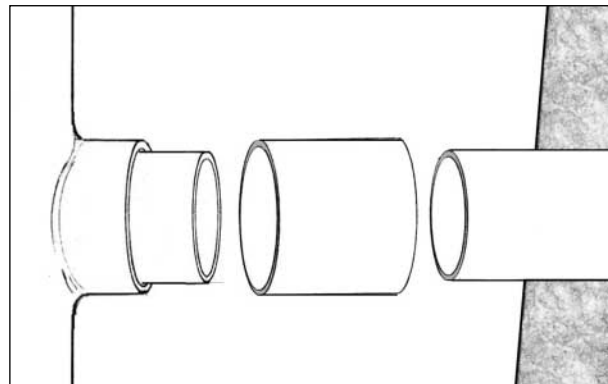
Either use the stainless steel set screws provided or glue the extensions in place.



Optional

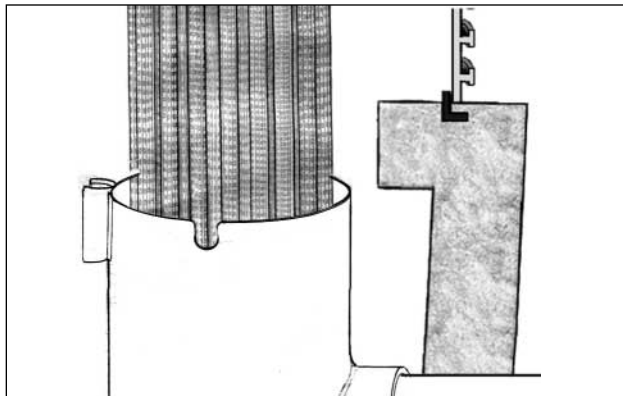
In existing tanks or in tanks with poorly located access ports, it may be necessary to extend the tank outlet fitting by using a coupling.

A coupling may also be needed to bush from 3034 PVC to the schedule 40 outlet of the filter.



Maintenance Instructions (continued)

1. Remove the filter cartridge by lifting it out of the vault.
2. Spray the cartridge tubes with a hose to remove material sticking to them. Make sure the rinse water runs back into the tank.



3. Inspect the vent hole and modulating orifices. Spray them clear of any debris.

Replace the cartridge. Be sure to snap the cartridge back into the saddle holes at the top of the cartridge vault.



4. An alarm is optional and will give notice that the filter needs attention before the building sewer backs up.

If you have an alarm, check to make sure it is working by lifting the float switch and sounding the alarm.

