

EZflow Golf Course Drainage Products for ... Fairways

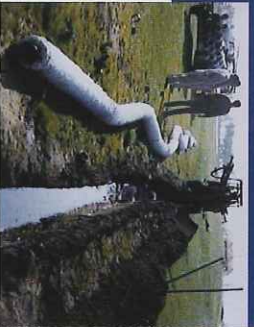


Bunkers



and Other Problem Areas

The superior drainage application for golf course construction, renovations and repairs.



EZflow golf course drainage products are currently being used in several of the nation's top courses such as:

- The entire Robert Trent Jones Golf Trail (AL)
 - PGA International (Daytona Beach, FL)
 - Monterey Peninsula CC (Pebble Beach, CA)
 - Philadelphia CC (Gladwynne, PA)
 - Farm Links (Syacauga, AL)
 - Spring Creek Ranch (Collierville, TN)
- and many other courses across the nation.

Available product widths and pipe sizes.



Special orders available in pipe diameters up to 14".



INDUSTRIAL GROUP

CORPORATE OFFICES
Ring Industrial Group, LP
 30 Industrial Park • Oakland, TN 38060
 For more information, call:
 (800) 649-0253
www.ringindustrial.com



PARTNER

1019-011405

©2006 Ring Industrial Group, LP



MEMBER

Golf Course Applications



EVAPOTRANSPIRATION EASE OF INSTALLATION MORE INFILTRATIVE AREA

HYDRAULIC GRADIENT BARRIER MATERIAL ENGINEERED FLOW CHANNELS
 LARGE SIDEWALL AREA
 85% OPEN BOTTOM AREA
 NO FINES OR COMPACTION
 LARGE VOID VOLUME

Innovators in Drainage Technology

EZflow Golf Course Drainage Products the Perfect System

EZflow brand Drainage System's Benefits

- **Ease of Installation**
- **Convenient ten-foot sections** - Easy to connect by using internal couplers.
- **Light weight components** - One Hundred pounds of **EZflow** replaces eight tons of gravel.
- **Quick Installations** - Reducing installation times by half.
- **Reduced Labor** - A single individual can install an entire system.
- **Flexibility** - **EZflow** bends around trees and other fixed obstacles.
- **Prevents damage to fairways** - Heavy trucks or carts are no longer needed to haul gravel or stone across fairways.
- **Easy Clean-up** - Because no gravel is left in fairways or bunkers.

Performance Qualities that allow for Maximum System Life

- **Improved flow** - With five times the flow rate of gravel.
- **Increased void volume and storage capacity** - Created by the engineered flow channels in the aggregate.
- **No Fines** - Eliminating gravel fines that cause premature trench failure.
- **Resists Trench Bottom Compaction** - Due to the structural integrity of the aggregate.
- **Tolerant of Normal Vehicle Loading** - The polystyrene aggregate does not allow the pipe to be crushed, and independent tests have proven a load rating of H-10 (16,000 pounds per axle).

Other Benefits associated with EZflow Products.

- **Cost Savings** - Resulting from the reduced transport and installation cost.
- **Recycled Products** - Using recycled polystyrene prevents millions of pounds of waste from unproductively filling landfills.
- **Friendly to Nature** - Preventing the unsightly defacing of nature associated with rock excavation.



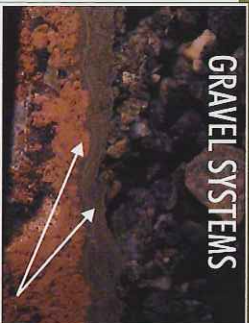
To see the complete results of this study visit us on the web.

Negative aspects of using gravel

- **Fines** - clog trench bottom.
- **Inconsistent shape** - reduces storage capacity and lowers hydraulic conductivity.
- **Weight** - causes trench bottom compaction.

Dr. Barry Stewart of Mississippi State University uncovers a two-year-old **EZflow** system installed in a sand trap at the Women's LPGA course in Daytona Beach, FL. The unit was in pristine condition. It is safe to say that this system and others like it can have a life expectancy of 10 years or more!

GRAVEL SYSTEMS



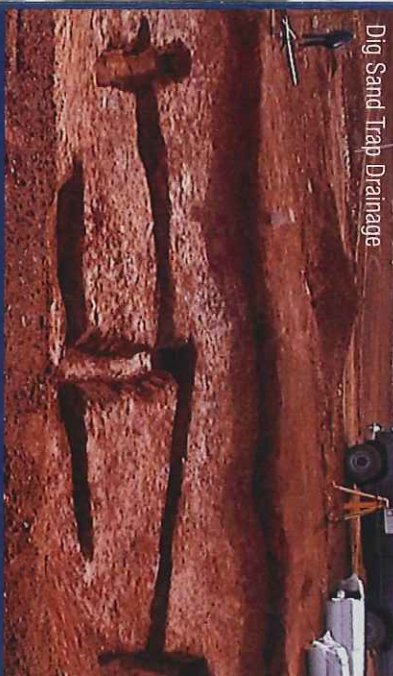
FINES AND HEAVIER PARTICLES HAVE CLOSED OFF TRENCH BOTTOM WHICH LEADS TO PREMATURE SYSTEM FAILURE



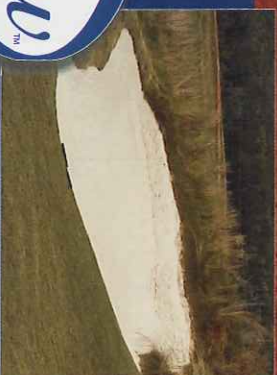
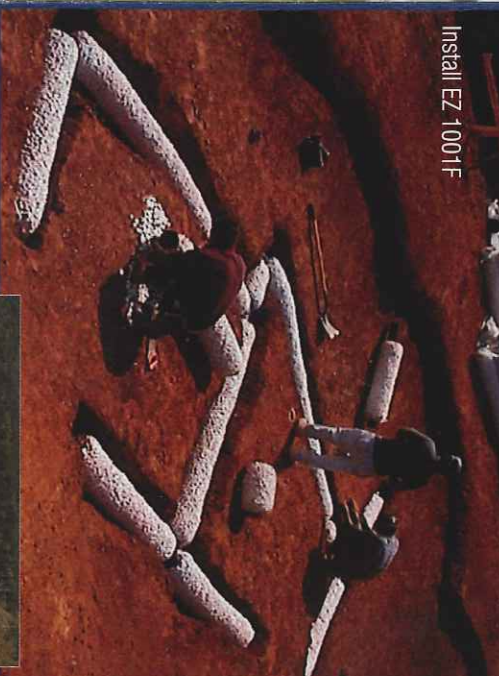
The patented **EZflow** PolyRock is uniquely engineered with "flow channels" designed to increase void space—creating improved water flow, greater storage capacity and structural integrity to resist compaction.

When superior bunker
drainage is needed ...

Dig Sand Trap Drainage



Install EZ 1001F



EZflow is the solution.